

Alpha Epsilon Phi

Beta Lambda Chapter

California Polytechnic State University,

San Luis Obispo

Winter Newsletter 2016

A Letter from the President

Hello!

For those who haven't met me yet, my name is Samantha Dorenfeld and I'm the president of Alpha Epsilon Phi, Beta Lambda Chapter.

I cannot believe that winter quarter is already over and that spring is finally here: time really does fly. It's been such an amazing ten weeks serving as president and I am so excited to see what this upcoming quarter has in store for Beta Lambda.

This past quarter, we did a variety of exciting things ranging from recruitment, to sisterhood programs and social events, to philanthropy events, and of course, it was always a great time. I have loved seeing our amazing seven new members bond with active sisters and become integrated into our sisterhood. Iota class, I am really looking forward to what your future in AEPhi has in store for you. We are now 49 members strong and our sisterhood is continuing to grow in size and strengthen in spirit.

Some of my favorite things from the past quarter have been Preference Night and Bid Day, where we really got to showcase our sisterhood to potential new members going through recruitment. I also really enjoyed our second annual "lock-in" which brought us back to our roots and reminded us why we joined such an amazing organization. Another fun event was when we volunteered at Congregation Beth David, a local temple, and baked challah for its older congregants for Shabbat.

We also participated in Kappa Sigma's "Boot Camp" and Delta Chi's "Iron Chef" where some members showcased their physical strength and their cooking skills. Along with this, we volunteered at Growing Grounds, a local nursery, with the men of ZBT and it felt great to give back to our community.

This upcoming spring we are excited to host our third annual Ultimate Phrisbee philanthropy event, the third annual Shabbat 250 with Hillel, Chabad and AEPhi and our annual alumni weekend.

I feel so blessed to be a part of such an incredible organization and to be sisters and friends with every member of Beta Lambda Chapter. The women in this organization are the most selfless, kind and compassionate women I have ever met and I am beyond lucky to have them by my side through all of the ups and downs of college; I know that others feel this way too. The women of Beta Lambda Chapter encourage each other everyday, and that is something that I will always be grateful for.

Thank you for supporting Alpha Epsilon Phi, Beta Lambda Chapter. I am confident that Spring Quarter has many great things in store for us!

Best,
Samantha Dorenfeld

Welcome 2016 Executive Board



Samantha Dorenfeld
President



Lior Shimoni
VP of Operations



Brooke Begun
VP of Finance



Leah Botelho
VP of Programing and Scholarship



Rachel
Rosenbloom
VP of Social
Standards



Sabrina Meleo
VP of Membership
and Recruitment



Emily Joachim
VP of New Member
Education

Bid Day 2016!

Welcome Iota New Member Class



We welcomed 7 new members to our family this quarter! We are so excited to share lasting memories with them!

Philanthropy

This quarter we participated in Delta Chi's Iron Chef, supporting the Jimmy V Foundation. We volunteered at Growing Grounds, a nursery that helps support people with mental illness with the men of Zeta Beta Tau. We participated in Kappa Sigma's Boot Camp. And we are currently getting ready for our annual phrisbee event next quarter!



Sisterhood

This quarter our seniors went on their annual trip! We had fun hikes together, ski trips, big/little reveal and our lock-in bonding event! We also had a dinner with our advisor, Shohreh.



Social

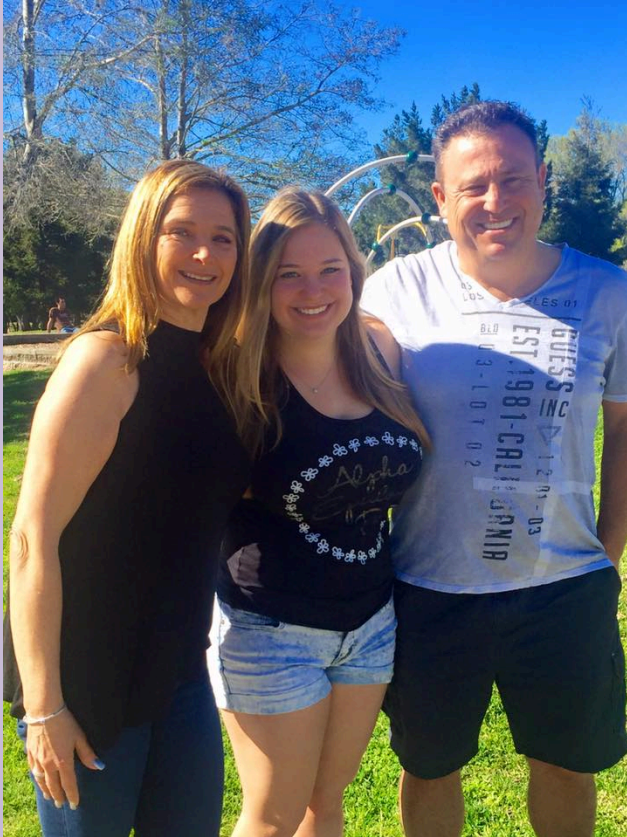


This quarter we had a bonfire with the gentlemen of Tau Kappa Epsilon! We had an excellent time. We also had some outings with our sisters!



Programming

Parents Weekend



We had a lovely time showing our home to our family at parents weekend this quarter! We also had a helpful interview prep and resume building course put on by our VP of Programming, Leah. And we got the highest overall GPA of all Greek organizations on campus! We are very proud of our girls.

*The ladies of Alpha
Epsilon Phi thank you
and wish you a happy
spring!*

For more AEPhi updates follow us on
Facebook, Instagram, Tumblr, Twitter and
check out our website at sloaephi.com!

